



# EverPass Device Installation Guide

Your step-by-step guide to setting up  
EverPass hardware and software

Clear instructions to help you get up and  
running quickly and confidently

# Welcome to EverPass

For future support ease, we recommend writing a few bits of information about your device here.

---

Account Name

Account Email

---

Device Serial Number

## Visit the EverPass Help Center

Our Help Center offers easy-to-follow text and short-form video tutorials to help you get comfortable with the EverPass Manager. From creating promotions and scheduling content to navigating layout and functionality, you'll find step-by-step guidance in this booklet, and on our digital Help Center for every feature.



Scan the QR code to access the Help Center

# Table of Contents

Page 4

---

**Contents of  
the Box**

Page 6

---

**Power Your  
EverPass Device**

Page 7

---

**Connect Your  
Device to a TV**

Page 9

---

**Connect Your  
Device to Internet**

Page 12

---

**Rename Your Device**

Page 13

---

**Set Up Checklist**

Page 14

---

**Logging in to  
the EverPass Manager**

Page 16

---

**Test Your  
Bandwidth Speed**

Page 17

---

**Run a Test Stream  
for Each Device**

Page 18

---

**Select the Events  
You Want to Stream**

Page 21

---

**Appendix**

# EverPass Best Practices

Follow these tips for a smooth setup and optimal performance with your device and EverPass platform.

## WiFi Connection

For optimal performance, we recommend connecting your device to a private and dedicated WiFi network with a strong bandwidth connection.

---

## Store Your Remote in a Safe Spot

You can use your remote to select what is playing on your TVs through the On-Screen Guide, and may need to use the remote again in the future if you change your WiFi network or need to troubleshoot your device.

---

## Logging in to the EverPass Manager

The EverPass Manager is your online hub for managing your EverPass experience. To access your account, look for an email with the subject line “**Welcome to EverPass – Let’s Get Started.**” It contains a link to activate your account and set your password.

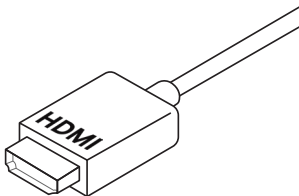
If you cannot find this email, please contact customer support at: **(855) 787-7469** or **support@everpass.com**.

---

# Contents of the Box

Your EverPass device comes with everything you need to get started. Each box includes the items listed below. If anything is missing, contact us at **(855) 787-7469** or **support@everpass.com**.

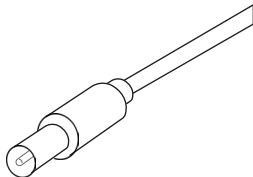
**HDMI Cord**



**EverPass Device**



**Power Adapter**



**Remote**



**Cleansing Wipe**

For Optional Mounting

**Velcro**

For Optional Mounting

# Installing Your EverPass Device

Welcome to EverPass, we look forward to helping your business turn your TVs into revenue driving tools. Now, let's get your device up and running.

Step 1 | **Power Your EverPass Device**

Step 2 | **Connect Your Device to a TV**

Step 3 | **Connect Your Device to Internet**

Step 4 | **Activate Your Device**

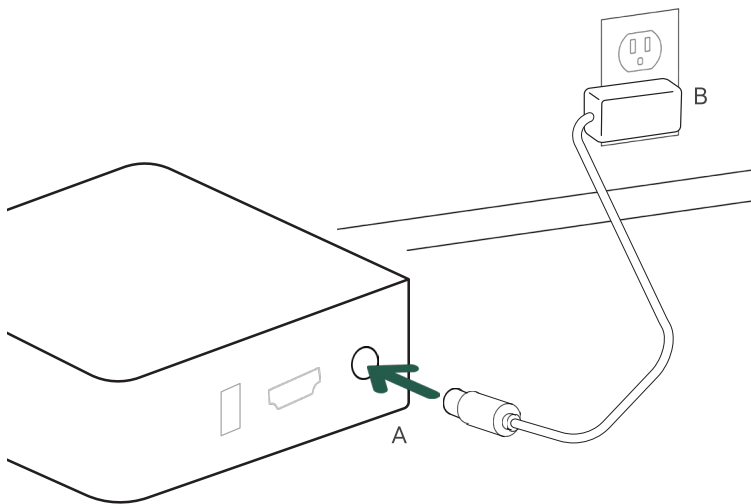
STEP 1

# Power Your EverPass Device

1.1

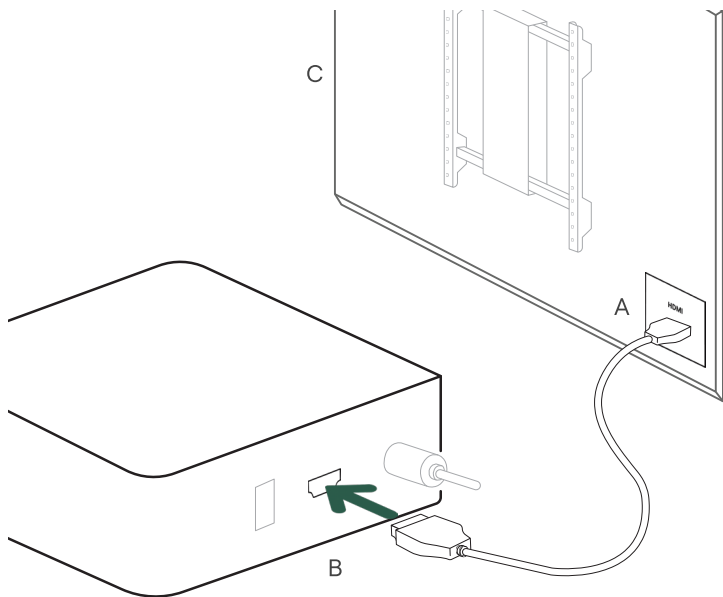
## Connect Your Device to Power

- A: Plug one end of the power cord into your device.
- B: Plug the other end of the power adapter into a wall outlet.



## Connect Your Device to the TV

- A: Using the HDMI cord, connect one end to any available HDMI input on your TV or AV rack.
- B: Connect the other end of the HDMI cord to your device.
- C: Once your TV is set to show the correct input, you will be prompted to connect your device to WiFi.



# Connect Your Device to the Internet

We recommend to connecting your device to a private, dedicated WiFi network with a strong bandwidth connection for optimal performance.

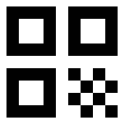
If you are using an Ethernet cord, plug it into your router and device, and then skip the rest of this section.

## 2.1

### Access Your WiFi Setup

After powering your EverPass device, a QR code with a URL below it will appear on your screen. This is how you will connect your EverPass Device to the internet via Wi-Fi. The antenna must be attached for a wireless network connection.

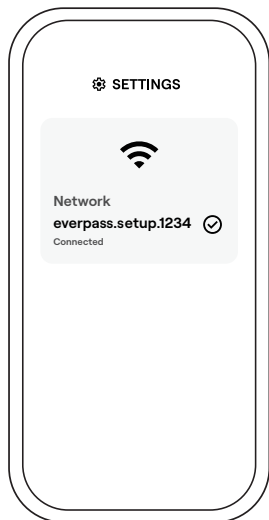
The QR code and URL take you to the same set up steps. We recommend using the QR code via smart phone for this step.



## Connect to Your Device's Gateway

Scan the QR code with your smartphone.

If you don't have a smartphone, enter the URL shown below the QR code into your web browser.



After scanning the QR code (or entering the on-screen URL), you'll be taken to a setup page that displays a temporary EverPass WiFi network name.

This is the device's setup gateway — a short-term network it creates so you can securely connect your phone or laptop and finish configuring the device.

## Connect to WiFi

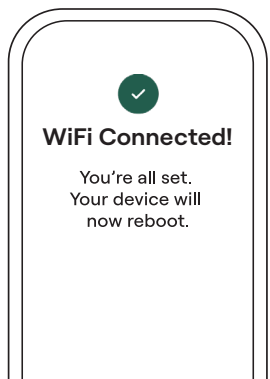
The setup page will display a temporary EverPass WiFi network name. This is your device's setup gateway.

In your phone, tablet or computer's WiFi settings, select the network with the gateway's name. After connecting, return to the setup page and click "Continue With Setup."



The setup page will ask you to choose the WiFi network you want your device to use. Select your business's private WiFi network, enter the password, and click Connect.

The device will transfer from the temporary setup network to your WiFi and automatically restart.



Your device is now connected to the internet!

After a successful connection, you will see an EverPass graphic on your screen.



2.4

## Rename Your Device

Once your device is online, give it a unique name to make content assignment easier.

### To Rename a Device:

1. Log in to the EverPass Manager
2. Go to Device Manager (top-right corner)
3. Click the pencil icon next to the device name
4. Enter a new name and click Save

Use location-based names so it's clear which TV is which (e.g. Back Bar, Dining Room Right, Host Stand, Patio 1).

From this screen, you can also identify your device, reboot it, and run a speed test for your device(s).

# Set Up Checklist

Use this checklist to confirm that your device is fully set up and ready to go.

Power cord connected to device and plugged into an outlet

---

HDMI cord connected to device and TV

---

Device connected to the Internet (WiFi or Ethernet)

---

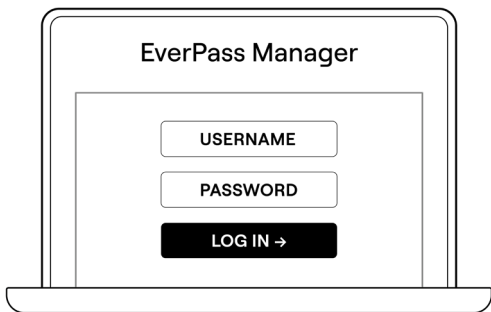
Antenna attached securely and pointed outwards

---

# Log In to the EverPass Manager to Schedule Content

You're all set up and ready to start scheduling content.

To get started, log in to the EverPass Manager. Search your inbox for an email with the subject line **"Welcome to EverPass – Let's Get Started."** It includes a link to activate your account and set your password.



## Log in to the EverPass Manager

Scan here or visit [manager.everpass.com](https://manager.everpass.com) to access the EverPass Manager

# Set Up Guide For Streaming Customers

Before game day, make sure you're set up for a smooth streaming experience. Just follow these three quick steps to get ready:

Step 1 | **Test Your Bandwidth Speed**

Step 2 | **Schedule a Test Stream**

Step 3 | **Make a Playlist and Schedule Content**

# Test Your Bandwidth Speed

Once your device is installed and connected to the internet, confirm your venue's network is ready for streaming. We recommend 15 MBPS to get a quality stream, and to make sure you're getting the recommended connectivity, follow these steps:

Log in to the EverPass Manager, and navigate to the Devices page. From the Devices page in the EverPass Manager, you'll find the option to run a speed test and verify your connection is adequate.



## Need Help?

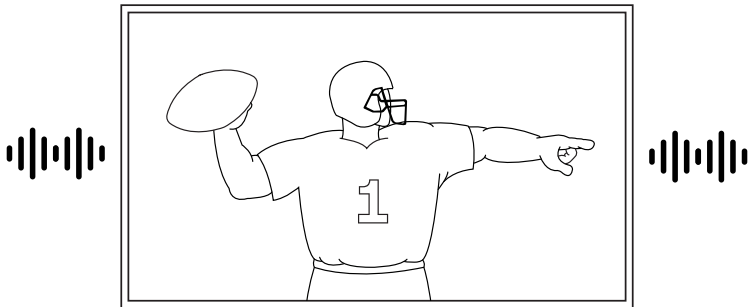
Scan the QR code for help with this test.

# Run a Test Stream for Each Device

Before jumping into streaming, we recommend you run a test stream on your TV to check the quality of both video and audio before game day.

Log in to the EverPass Manager to run a test stream on your device(s).

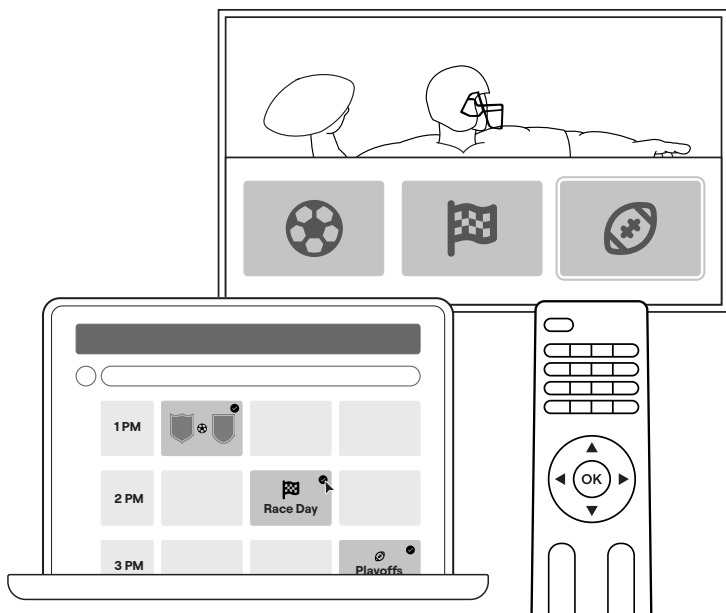
From the Devices page in the EverPass Manager, you'll find the option to launch a test stream and confirm everything is working as expected.



### STEP 3

## Select the Events You Want to Stream

Open the On-Screen Guide by pressing the up arrow on your remote, then select the event you want to stream. You can also schedule events at [manager.everpass.com](http://manager.everpass.com) on a laptop.



# You're Ready to Stream Live Sports!

Keep an eye out for our weekly Tune In email series. It highlights all the live events available on EverPass each week and spotlights new content, features, and tips for getting the most out of the EverPass Manager.

## Questions?

If you ever need help, our dedicated support team is here for you.

**support@everpass.com**  
**(855) 787-7469**

## Support Hours:

**Daily, 9 AM—8 PM ET**

Extended support hours are available during select live-streaming events. For a small number of international events airing overnight (typically between 12-6 AM ET), live support may be limited.



### Need Help?

Scan this QR code to visit our Help Center, and help on every feature.

# Three Ways to Schedule Live Events

In addition to the EverPass Manager via desktop, there are two more easy ways to schedule content:

## EverPass Manager

From a desktop, view and schedule games in advance to play during their air times.

## Mobile Scheduler

Quickly schedule games in real time using your mobile device.

## On-Screen Guide

Use your device's remote to explore and schedule live events directly from your TV.



Scan to visit our Help Center article on the ways to schedule

**APPENDIX:**  
**Get to Know your EverPass  
Device & Remote**

# Components of Your Device

A: Antenna

B: USB Remote Receiver

C: Audio Output

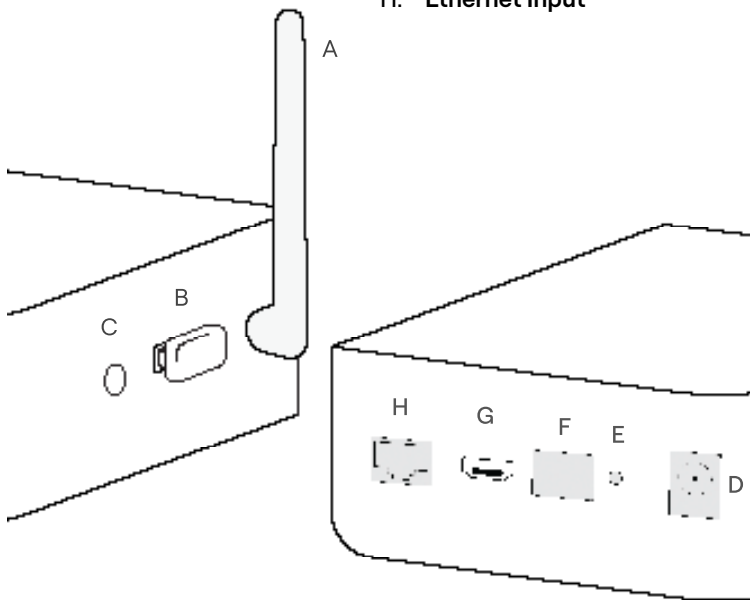
D: Power Cord Input

E: Reset Button

F: MicroSD

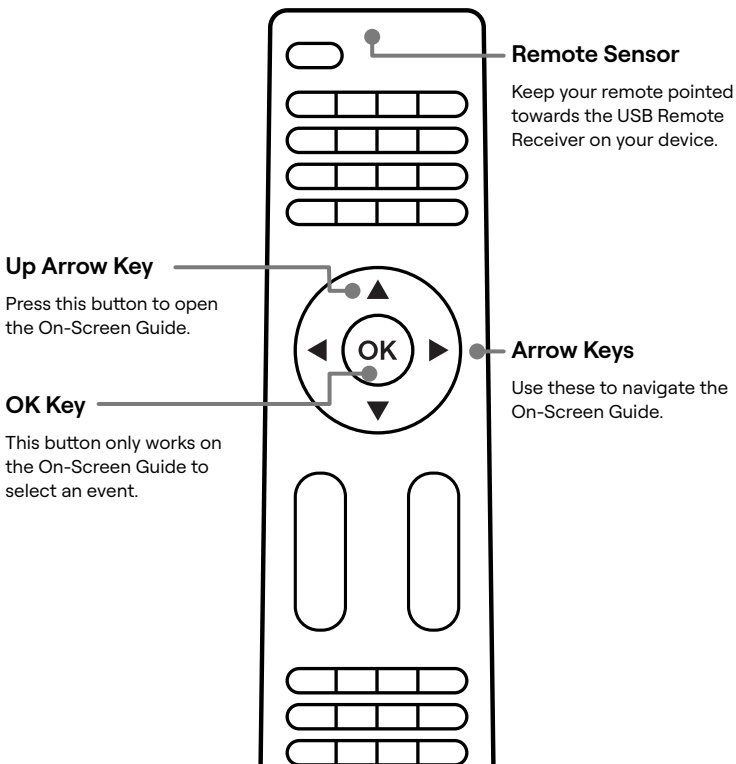
G: HDMI Input

H: Ethernet Input



# Knowing Your Remote

This remote only controls your EverPass Device, not your TV (including volume or TV settings).



**BrightSign**